



iNfeel

Vol.15

iNfeel
Vol.15

INDEX

SM

SM 834	F/G	09
SM 835	F/G	09
SM 836	F/G	08
SM 837	F/G	08
SM 838	F/G	09
SM 839	F/G	09
SM 882	F/G	09
SM 883	F/G	09
SM 884	F/G	09
SM 885	F/G	09
SM 886	F/G New	08

MD

MD 970	F/G New	10
MD 974	F/G New	10
MD 975	F/G New	11
MD 976	F/G New	11

SL

SL 500	F/G	13
SL 508	G	16
SL 513	F/G	16
SL 514	F/G	16
SL 515	G	13
SL 516	F/G	13
SL 519	F/G	13
SL 521	F/G	13
SL 522	F/G	14
SL 523	F/G	13
SL 524	F/G	14
SL 526	F/G	15
SL 527	F/G	13
SL 528	G	13
SL 529	G	13
SL 530	G	13
SL 532	F/G	15
SL 533	G	15
SL 534	F/G	15
SL 536	G	13
SL 539	F/G	13

SL 541	F/G	14
SL 542	F/G	14
SL 543	F/G	14
SL 544	F/G	15
SL 545	G	15
SL 546	G	15
SL 547	G	15
SL 548	F/G	14
SL 549	F/G	14
SL 551	F/G	14
SL 553	F/G	14
SL 554	F/G	16
SL 557	F/G	15
SL 558	F/G	14
SL 559	F/G	16
SL 560	F/G	16
SL 561	F/G	13
SL 563	F/G	13
SL 564	F/G	14
SL 565	F/G	15
SL 566	F/G	15
SL 567	F/G	15
SL 568	G	15
SL 569	F/G	14
SL 570	F/G	15
SL 571	F/G	16
SL 572	F/G	16
SL 579	F/G New	15
SL 580	G	16
SL 581	F/G	16
SL 582	F/G	16
SL 583	F/G	13
SL 584	F/G	14
SL 585	F/G	14
SL 586	F/G	13
SL 587	F/G	14
SL 588	G	15
SL 589	F/G	13
SL 591	G	15
SL 593	G	15
SL 595	G	16
SL 596	F/G	14
SL 597	G	14
SL 598	G	13
SL 599	F/G	14
SL 610	F/G New	13
SL 611	F/G New	13

SL 612	F/G New	15
SL 613	F/G New	14
SL 614	F/G New	15
SL 616	F/G New	14

SD

SD 840	F/G	20
SD 841	F/G	21
SD 842	F/G	20
SD 844	F/G	20
SD 846	F/G	20
SD 848	F/G	20
SD 850	F/G	21
SD 852	F/G	20
SD 853	F/G	20
SD 854	G	20
SD 855	F/G	20
SD 856	F/G	21
SD 857	F/G	21
SD 858	F/G	20
SD 859	F/G	21
SD 863	F/G	21
SD 864	F/G New	18
SD 865	F/G New	18
SD 866	F/G New	19
SD 870	F/G New	19

EH/HG

EH 133	F/G New	27
EH 134	F/G New	27
EH 139	G	29
EH 140	F/G	29
EH 141	G	29
EH 145	G	29
EH 146	G	29
EH 147	G	29
EH 148	F/G	29
EH 150	G	29
EH 152	F/G	29
EH 153	F/G	29
EH 154	F/G New	25
EH 155	F/G New	25
EH 156	F/G New	25

EH 157	F/G New	25
EH 158	F/G New	26
EH 159	F/G New	26
HG 978	G	31
HG 980	G	31
HG 981	G	31
HG 983	G	31
HG 984	G	31
HG 990	G	31
HG 991	G	31
HG 992	G	31
HG 993	G	31

ST

ST 935	F/G New	34
ST 936	F/G New	34
ST 937	F/G New	34
ST 974	F/G New	32
ST 975	F/G New	32
LW 357	F/G	35
LW 379	F/G	35
LW 380	F/G	35
LW 449	F/G	35
LW 450	F/G	35
LW 727	F/G New	32
LW 728	F/G New	32
LW 742	G	35
LW 776	F/G	34
LW 777	F/G	34
LW 821	F/G	35
LW 822	F/G	35

MT/MS

MT 725	G New	36
MT 726	G New	36
MT 729	G New	36
MT 735	G	36
MT 741	F/G	36
MT 742	G	39
MT 744	G	39
MT 745	G	36
MT 746	G	36
MT 747	G	39

MS 712	F/G New	38
MS 715	F/G New	38
MS 716	F/G	39
MS 717	F/G	39
MS 718	F/G	39
MS 733	F/G	39
MS 734	F/G	39
MS 737	F/G	39
MS 738	F/G	39

FB

FB 929	F/G New	43
FB 931	F/G New	42
FB 932	F/G New	42
FB 933	F/G New	43
LW 461	F/G	43
LW 464	G	43
LW 721	F/G	43
LW 722	F/G	43
LW 723	F/G	43
LW 724	F/G	43

AB/PW

AB 010	G	44
AB 014	G	44
AB 016	G	44
AB 019	G	44
AB 020	G	44
AB 021	F/G	44
AB 022	F/G	44
AB 026	F/G	44
PW 411	G	44
PW 413	G	45
PW 426	G	44
PW 436	G	45
PW 438	G	45

LT

LT 671	G	46
LT 678	G	48
LT 679	G	48

LT 683	G	46
LT 684	G	49
LT 685	G	46
LT 687	G	49
LT 688	G	49
LT 694	G	48
LT 696	G	46
LT 697	G	46
LT 698	G	49
LT 702	G	46
LT 704	G	46
LT 707	G	48
LT 708	G	49
LT 714	G	46
LW 353	G	46
LW 354	G	46
LW 410	G	48
LW 411	G	48
LW 412	G	49
LW 414	G	49
LW 748	G	48
LW 749	G	48
LW 750	G	48
LW 751	G	48
LW 778	F/G	49
LW 779	F/G	49

NI

NI 910	G	50
NI 940	G	51
NI 941	G	51
NI 945	G	51
NI 948	G	51
NI 949	G	51
NI 950	G	50
NI 952	G	50
NI 953	G	51
NI 957	G	51
NI 987	G	50
NI 996	G	51
NI 997	G	51

WD

WD 003	F/G	63
WD 005	G	62
WD 008	F/G	66
WD 009	G	70
WD 024	G	69
WD 028	G	56
WD 029	G	55
WD 034	G	63
WD 035	G	66
WD 048	F/G	69
WD 049	F/G	66
WD 066	F/G	60
WD 072	G	62
WD 073	G	63
WD 084	F/G	62
WD 094	G	66
WD 112	F/G	55
WD 114	G	59
WD 115	F/G	65
WD 117	G	59
WD 119	G	67
WD 121	G	62
WD 123	G	56
WD 124	F/G	55
WD 125	G	55
WD 126	F/G	73
WD 127	G	62
WD 128	G	60
WD 142	G	60
WD 143	G	65
WD 160	F/G	55
WD 161	G	55
WD 162	G	72
WD 163	F/G	60
WD 166	F/G	55
WD 167	G	59
WD 168	F/G	63
WD 169	F/G	67
WD 171	F/G	59
WD 172	F/G	60
WD 173	F/G	60
WD 174	F/G New	54
WD 175	F/G New	54
WD 180	G	66

WD 188	F/G	71
WD 189	G	70
WD 204	G	71
WD 225	F/G	66
WD 226	F/G	71
WD 234	F/G	66
WD 235	F/G	66
WD 243	F	56
WD 258	G	67
WD 259	F/G	69
WD 288	G	70
WD 296	F/G	69
WD 300	F/G	62
WD 301	F/G	63
WD 302	F/G	63
WD 305	F/G	63
WD 306	F/G	69
WD 307	F/G	59
WD 308	G	67
WD 311	F/G	67
WD 312	G	69
WD 313	F/G	63
WD 315	G	69
WD 320	G 🌀	56
WD 323	F/G	67
WD 324	G	70
WD 325	G	62
WD 326	G	63
WD 327	G	62
WD 329	G	65
WD 330	G	67
WD 331	F/G	60
WD 332	F/G	65
WD 336	G	65
WD 338	G	72
WD 373	G	73
WD 389	G	73
WD 391	F/G	72
WD 472	F/G	72
WD 506	G	67
WD 571	G	69
WD 624	G	69
WD 634	G	67
WD 653	G	56
WD 664	F/G	69
WD 695	G	66
WD 720	G	62

WD 793	G	56
WD 794	G	56
WD 799	G	66
WD 800	G	56
WD 811	F/G	59
WD 812	G	65
WD 814	G	56
WD 817	F/G	59
WD 818	G	65
WD 820	F/G	67
WD 823	G	65
WD 824	G	65
WD 825	G	59
WD 826	G	65
WD 827	G	55
WD 828	G	59
WD 830	G	55
WD 831	G	56
WD 833	G	63
WD 888	F	71
WD 902	F/G	60
WD 903	F/G	60
WD 904	G	55
WD 905	G	59
WD 906	F/G	62
WD 911	G	60

LW

LW 350	G	80
LW 400	G	79
LW 447	F/G	77
LW 448	F/G	80
LW 452	G	80
LW 466	G	79
LW 472	F/G	77
LW 473	G	79
LW 477	G	80
LW 478	G	79
LW 487	G	80
LW 491	G	77
LW 497	F/G	79
LW 498	G	79
LW 773	F/G New	75
LW 774	F/G New	75
LW 780	F/G	80

LW 871	G	78
LW 872	G	78
LW 873	G	79
LW 875	G	77
LW 876	G	77
LW 877	G	79
LW 888	G	79
LW 889	G	80
LW 890	G	80
LW 891	G	77
LW 892	G	77
LW 893	F/G	77
LW 993	F/G	80
LW 994	G	80
LW 996	F	77
LW 997	G	78
LW 998	G	78
LW 999	F/G	77

NEW

Living Space



The color of the above image may be different from the actual product color

A new product proposal



1 **New** **F** **G** **WD 175**
Real Panel Black
Modern Real Wood

p.54 2 **New** **F** **G** **EH 159**
Big marble
Marble Design

p.26

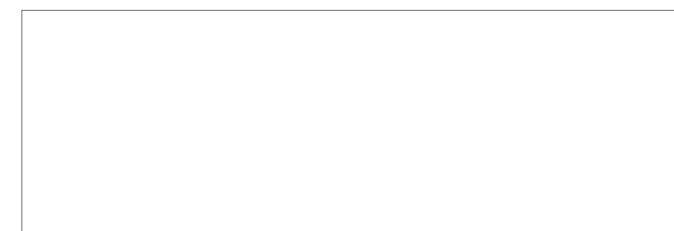
NEW

Living Space



The color of the above image may be different from the actual product color

A new product proposal



1 **New** **F** **G** **SL 610**
Solid
Rich White

p.13

2 **New** **F** **G** **SL 613**
Solid
Natural Deep Green

p.14

NEW

Commercial space



A new product proposal



1 **New** **F** **G** **FB 932** p.42
Linen
Woven Fabric



2 **New** **F** **G** **ST 974** p.32
Stripe Stone
Modern Minimal



3 **New** **F** **G** **MS 712** p.38
Metal Shiny
High Tech minimal

NEW

Commercial space



A new product proposal



1 **New** **F** **G** **EH 157** p.25
Herringbone Marble
Modern Pattern



2 **New** **F** **G** **EH 133** p.27
Bianca
Natural White

© SL 613

SOLID

Solid Matt / Matt Design
Solid / Solid Design

© SL 614

	Width	Unit	Thickness
Solid Matt	1,230mm	50m/roll	0.24mm
Matt Design	1,230mm	50m/roll	0.24mm
Solid	1,230mm	50m/roll	0.24mm
Solid Design	1,230mm	50m/roll	0.24mm

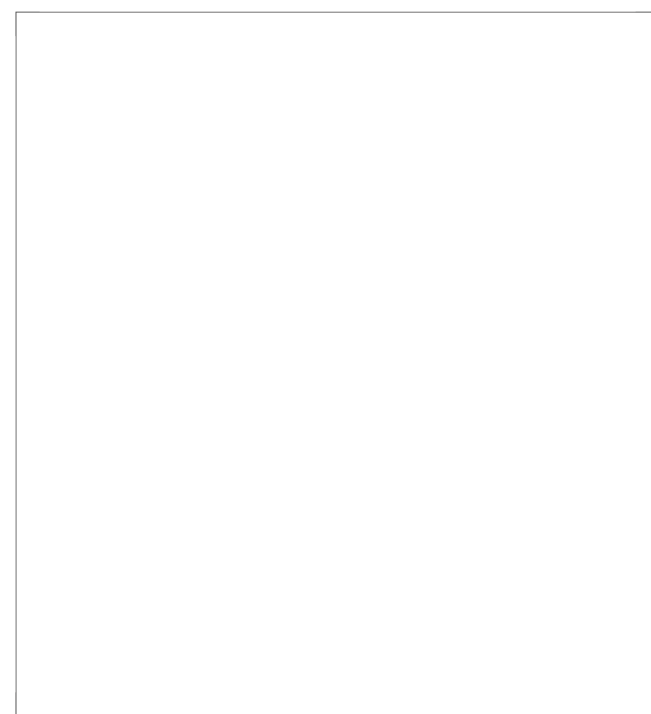
※ In case of the roll length for the FR(Fire Retardant) is 30m/roll

SM • Solid Matt



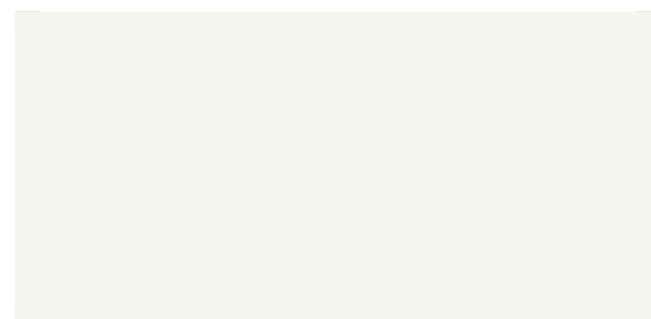
© SM 835

The color of the above image may be different from the actual product color



Solid Matt

New  **SM 886**



Solid Matt

 **SM 836**



Solid Matt

 **SM 837**



Solid Matt

 **SM 884**



Solid Matt

 **SM 835**



Solid Matt

 **SM 885**



Solid Matt

 **SM 838**



Solid Matt

 **SM 834**



Solid Matt

 **SM 882**



Solid Matt

 **SM 839**



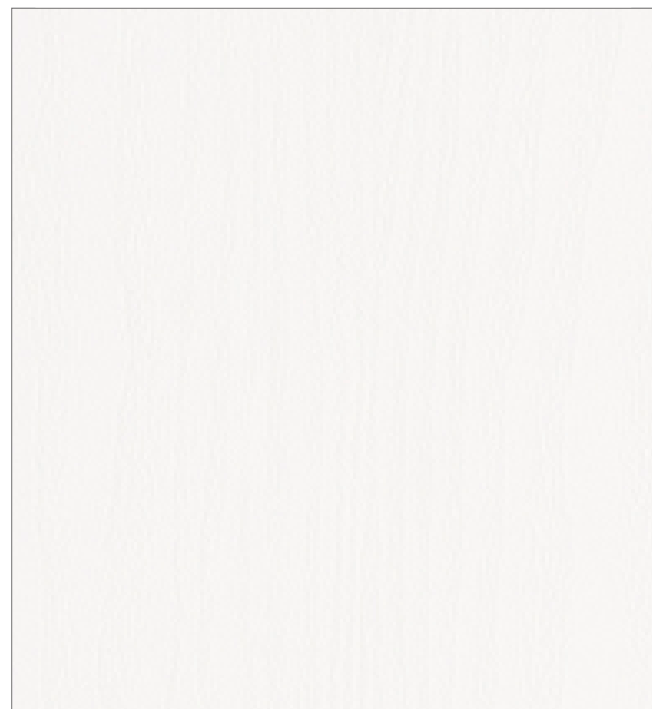
Solid Matt

 **SM 883**



Matt Design

New    MD 970



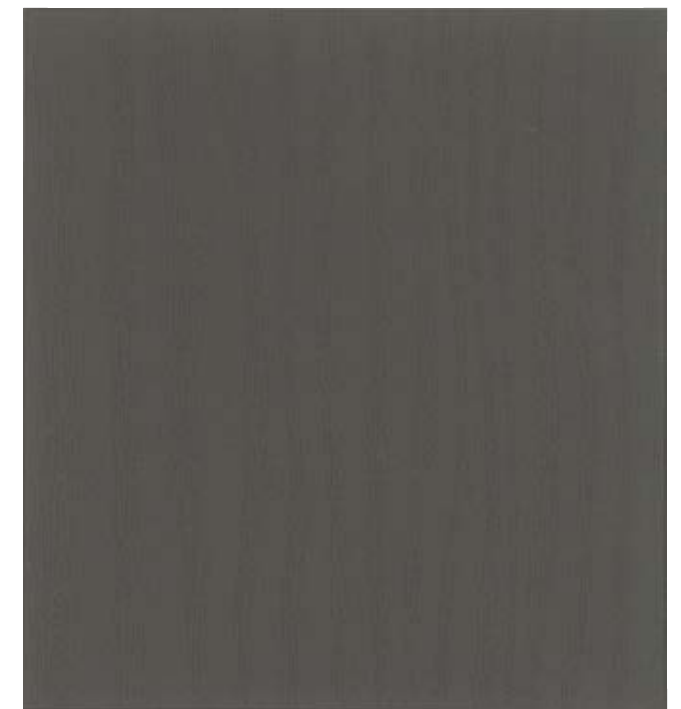
Matt Design

New    MD 974



Matt Design

New    MD 975

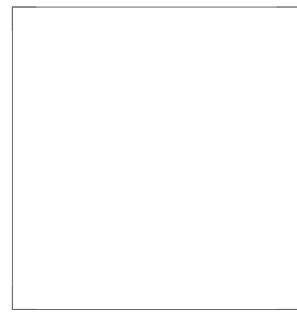


Matt Design

New    MD 976



SL • Solid



New F G SL 610



F G SL 523



F G SL 561



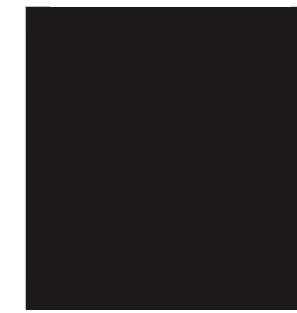
G SL 528



F G SL 599



New F G SL 616



F G SL 522



F G SL 584



G SL 515



G SL 529



G SL 536



F G SL 563



F G SL 585



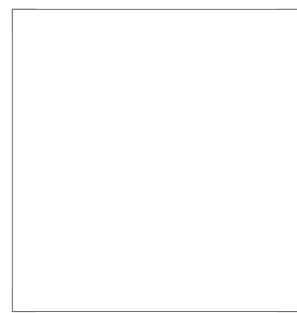
F G SL 564



F G SL 587



New F G SL 613



F G SL 516



G SL 598



G SL 530



New F G SL 611



F G SL 548



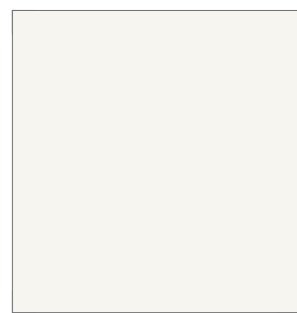
F G SL 553



F G SL 558



G SL 597



F G SL 521



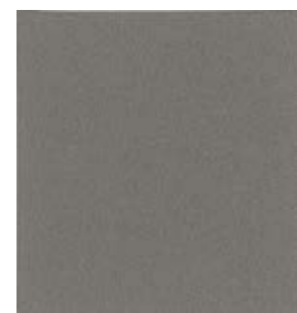
F G SL 519



F G SL 539



F G SL 527



F G SL 551



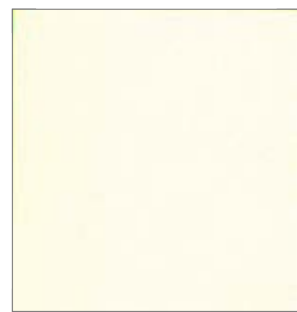
F G SL 543



F G SL 549



F G SL 524



F G SL 589



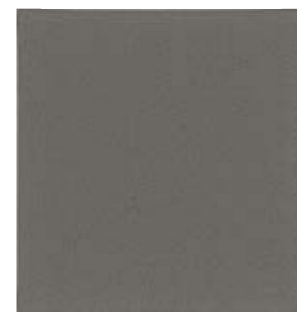
F G SL 586



F G SL 583



F G SL 500



F G SL 542



F G SL 541



F G SL 569



F G SL 596



FG SL 566



G SL 588



FG SL 534



G SL 591



New FG SL 579



New FG SL 614



G SL 533



FG SL 567



FG SL 565



New FG SL 612



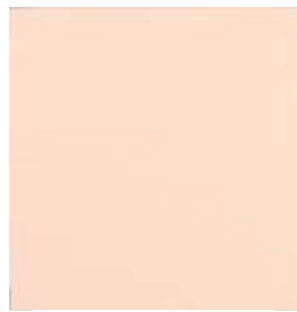
FG SL 532



G SL 546



FG SL 570



FG SL 557



FG SL 526



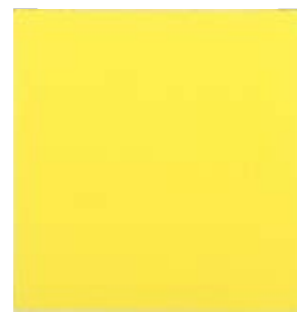
G SL 568



G SL 547



G SL 545



FG SL 544



G SL 593

Solid Emboss



FG SL 581



FG SL 571



FG SL 560



FG SL 554



G SL 595



FG SL 513



G SL 580



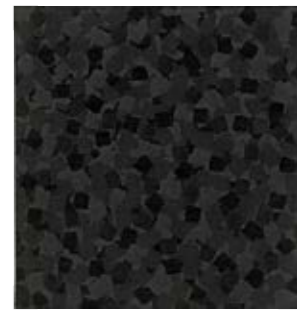
FG SL 582



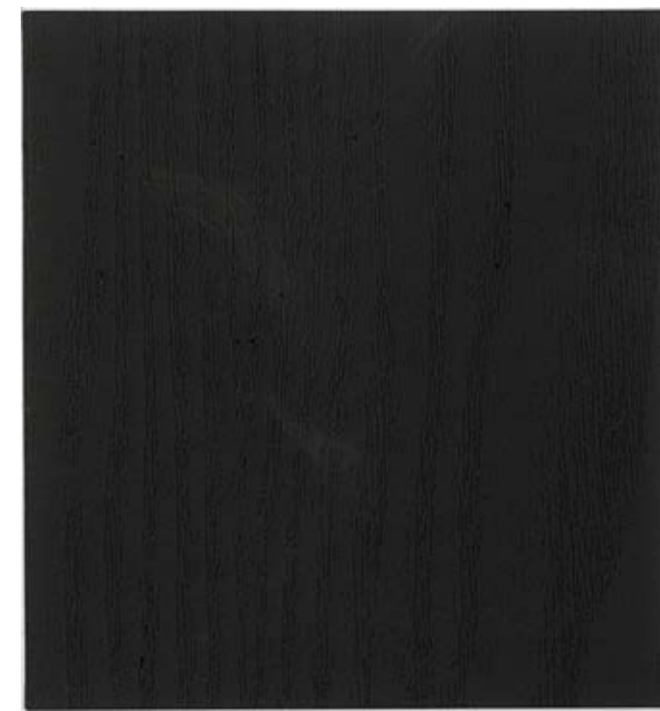
FG SL 572



FG SL 514



G SL 508



FG SL 559

SD • Solid Design

© SD 864

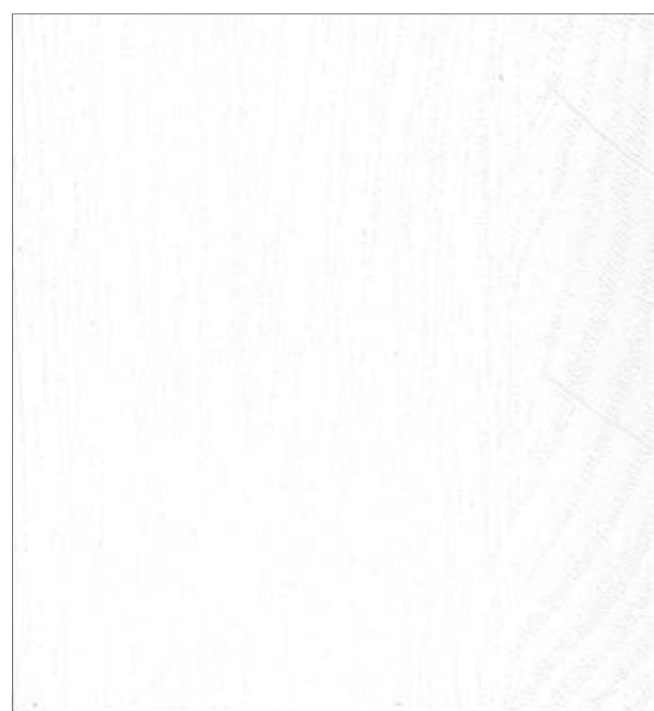


The color of the above image may be different from the actual product color

© SD 870



The color of the above image may be different from the actual product color



Solid Design

New   SD 864



Solid Design

New   SD 865



Solid Design

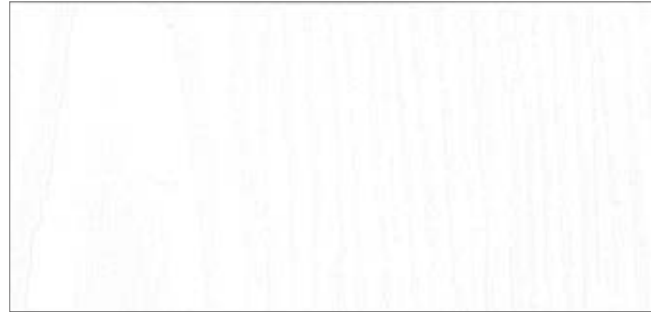
New   SD 870



Solid Design

New   SD 866

SD • Solid Design



Solid Design F G **SD 840**



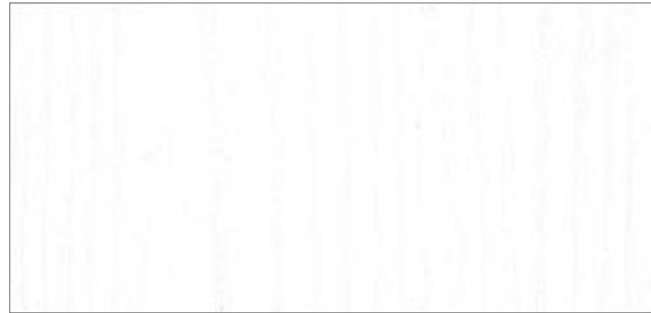
Solid Design F G **SD 848**



Solid Design F G **SD 857**



Solid Design F G **SD 863**



Solid Design F G **SD 844**



Solid Design F G **SD 858**



Solid Design F G **SD 850**



Solid Design F G **SD 856**



Solid Design F G **SD 842**



Solid Design F G **SD 852**



Solid Design F G **SD 841**



Solid Design F G **SD 859**



Solid Design G **SD 854**



Solid Design F G **SD 855**



Solid Design F G **SD 846**



Solid Design F G **SD 853**



© ST 974

Glossy & Mineral

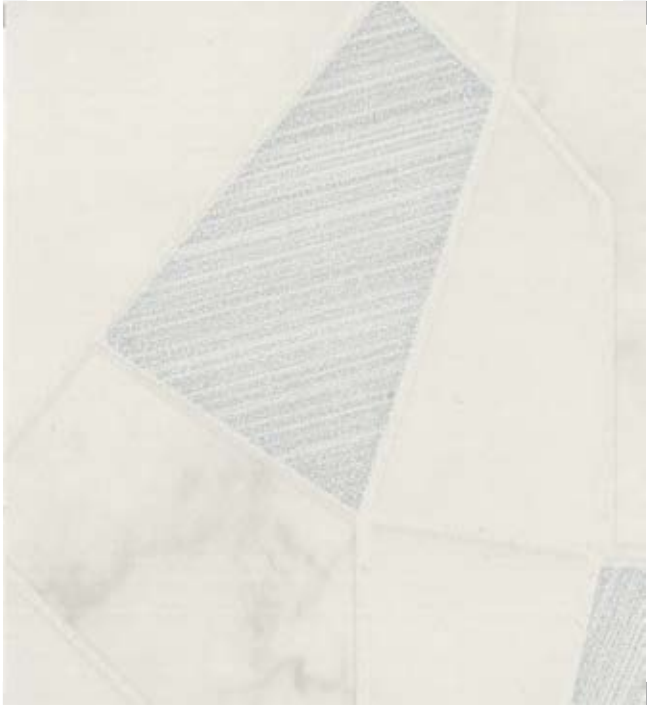
Enamel high-Gloss / High Gloss Stone
Metal / Metal Shiny

	Width	Unit	Thickness
Enamel High Gloss	1,230mm	50m/roll	0.24mm
High Gloss	1,230mm	50m/roll	0.24mm
Stone	1,230mm	50m/roll	0.24mm
Metal	1,230mm	50m/roll	0.24mm
Metal Shiny	1,230mm	50m/roll	0.24mm

* In case of the roll length for the FR(Fire Retardant) is 30m/roll

EH • Enamel High-gloss

© EH 157



Mix Silver Tile

New F G EH 155



Herringbone Marble

New F G EH 157



Mix Gold Tile

New F G EH 154



Herringbone Marble

New F G EH 156

EH • Enamel High-gloss

© EH 158



The color of the above image may be different from the actual product color



Big marble

New   EH 158



Big marble

New   EH 159



© EH 134

The color of the above image may be different from the actual product color



Bianca

New   EH 133



Nero

New   EH 134

EH • Enamel High-gloss



© EH 152

The color of the above image may be different from the actual product color



Marble **F G** EH 152



Marble **G** EH 139



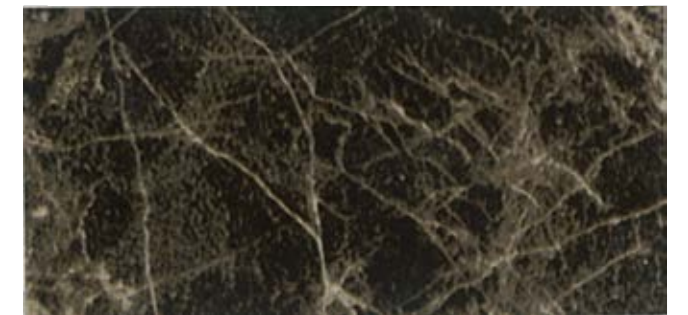
Marble **F G** EH 153



Marble **F G** EH 140



Marble **F G** EH 148



Marble **G** EH 145



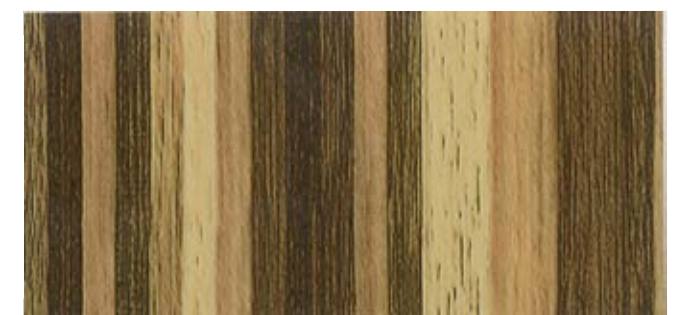
Marble **G** EH 150



Pearl Wave **G** EH 141



Marble **G** EH 147



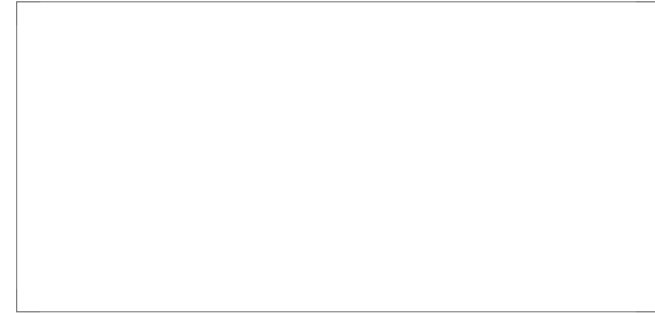
Panel **G** EH 146

HG·High-gloss



© HG 990

© HG 984



High-gloss

⑥ HG 990



High-gloss

⑥ HG 983



High-gloss

⑥ HG 980



High-gloss

⑥ HG 978



High-gloss

⑥ HG 993



High-gloss

⑥ HG 984



High-gloss

⑥ HG 981



High-gloss

⑥ HG 992



High-gloss

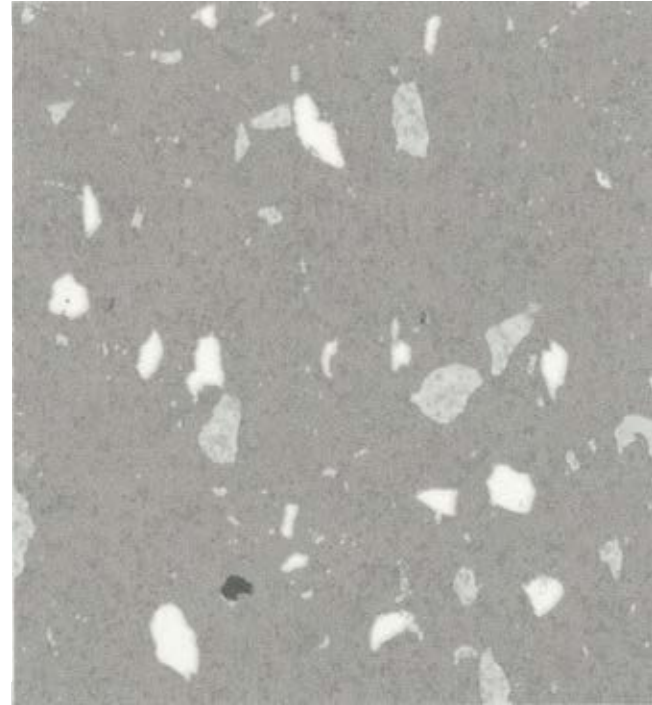
⑥ HG 991

ST • Stone



Stripe Stone

New   ST 974



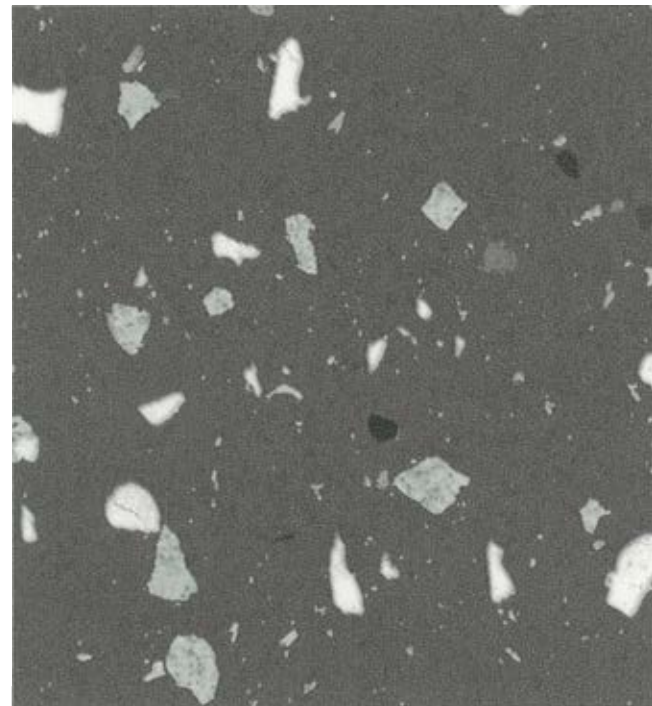
Terazzo

New   LW 727



Stripe Stone

New   ST 975



Terazzo

New   LW 728



© ST 975

ST • Stone



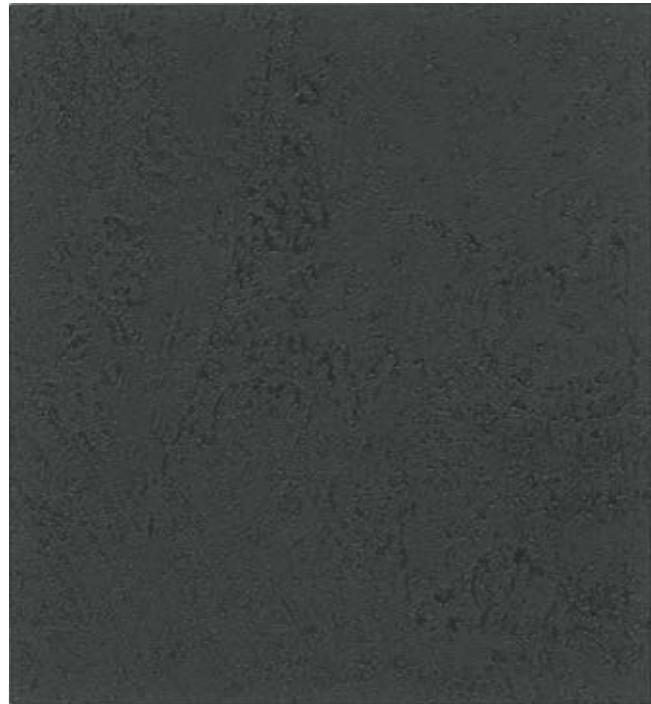
Stone

New   **ST 935**



Stone

New   **ST 936**



Stone

New   **ST 937**



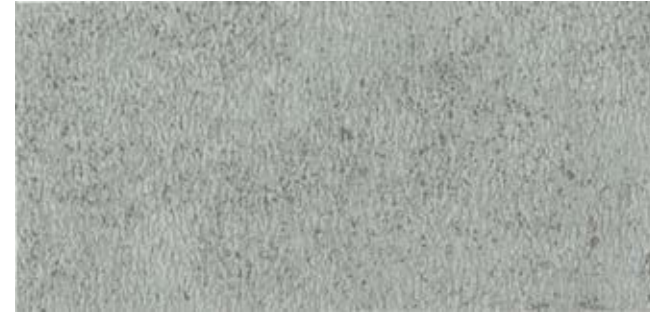
Concrete

  **LW 776**



Concrete

  **LW 777**



Concrete

  **LW 449**



Concrete

  **LW 821**



Concrete

  **LW 450**



Concrete

  **LW 822**



Brick

  **LW 379**



Brick

  **LW 357**



Brick

  **LW 380**



Cube Tile

 **LW 742**

MT • Metal / MS • Metal Shiny



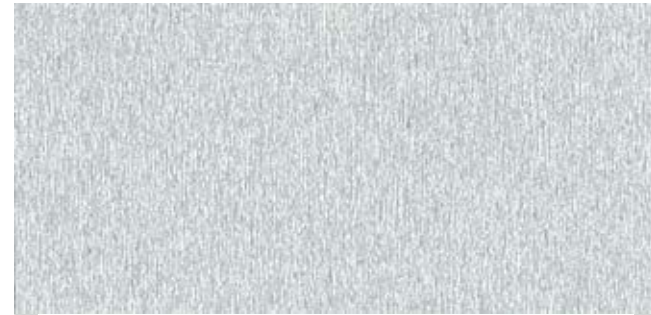
Metal New G MT 729



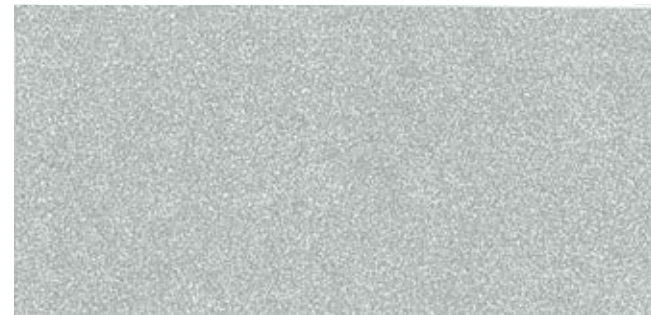
Metal New G MT 726



Metal New G MT 725



Metal F G MT 741



Metal G MT 745



Metal G MT 735



Metal G MT 746



© MT 729

MT · Metal / MS · Metal Shiny



© MS 712

The color of the above image may be different from the actual product color



Metal Shiny New F G **MS 715**



Metal Shiny New F G **MS 712**



Metal G **MT 742**



Metal Shiny F G **MS 717**



Metal G **MT 744**



Metal Shiny F G **MS 737**



Metal G **MT 747**



Metal Shiny F G **MS 733**



Metal Shiny F G **MS 734**



Metal Shiny F G **MS 718**



Metal Shiny F G **MS 738**



Metal Shiny F G **MS 716**

© FB 931

Natural

Fabric / Abstract / Paper Weave
Leather / Natural & Innovative

	Width	Unit	Thickness
Fabric	1,230mm	50m/roll	0.24mm
Abstract	1,230mm	50m/roll	0.24mm
Paper Weave	1,060mm	25m/roll	0.35mm
Leather	1,230mm	30m/roll	0.35mm
Natural & Innovative	1,230mm	50m/roll	0.24mm

※ In case of the roll length for the FR(Fire Retardant) is 30m/roll

FB • Fabric



Linen New F G **FB 931**



Linen New F G **FB 932**



Linen New F G **FB 933**



Linen New F G **FB 929**



Fabric F G **LW 723**



Fabric G **LW 464**



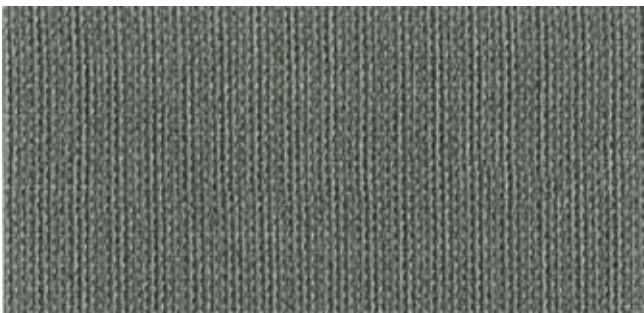
Fabric F G **LW 461**



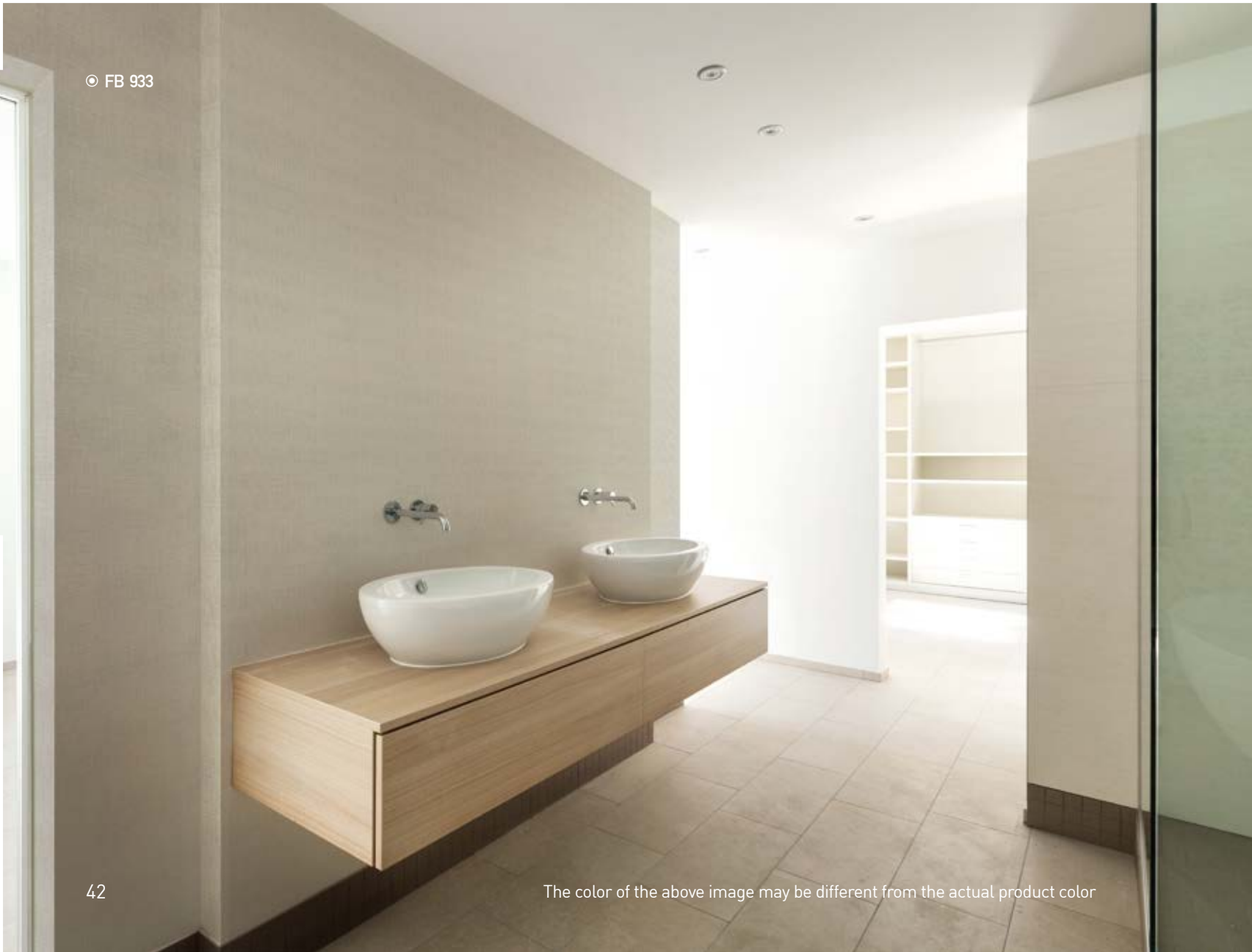
Fabric F G **LW 722**



Fabric F G **LW 721**



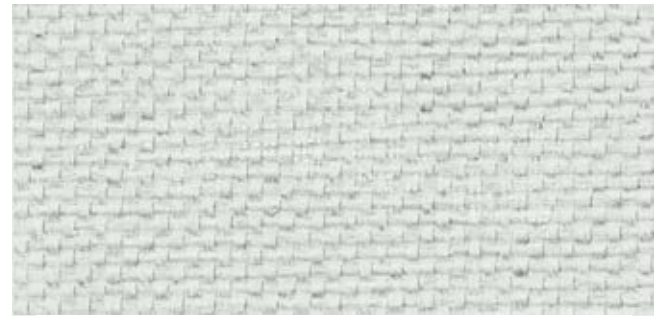
Fabric F G **LW 724**



© FB 933

The color of the above image may be different from the actual product color

AB • Abstract / PW • Paper Weave



White Metal G AB 019



Diaper F G AB 021



Paper Weave G PW 438



Paper Weave G PW 436



Stone G AB 010



Diaper F G AB 022



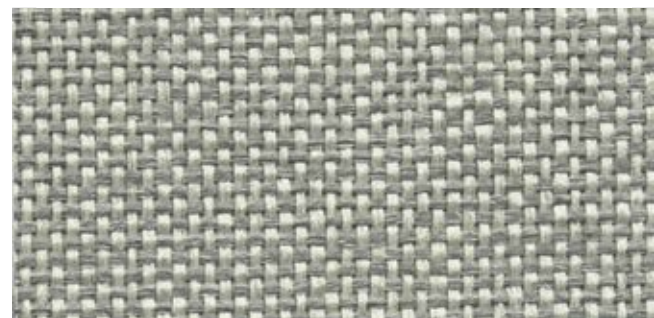
Paper Weave G PW 413



Shine Mesh G AB 016



Gun Metal G AB 020



Shine Mesh G AB 014



Diaper F G AB 026



Paper Weave G PW 411

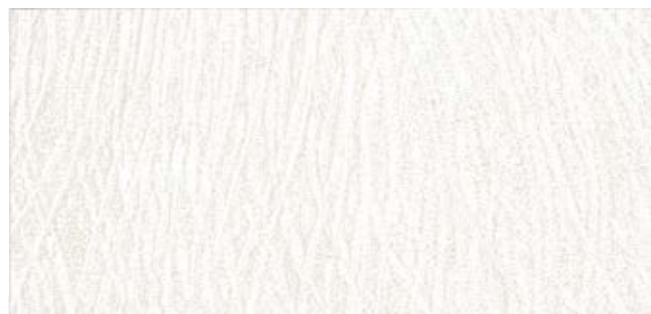


Paper Weave G PW 426



© PW 436

LT•Leather



Leather **LT 696**



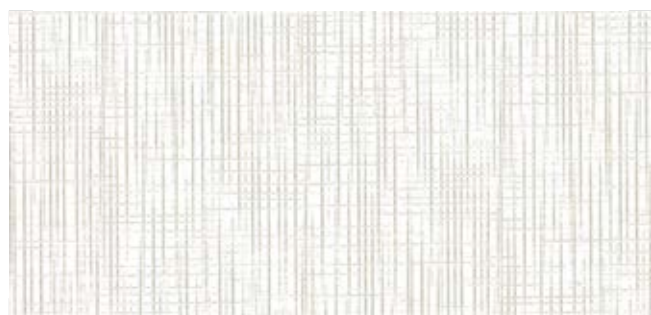
Leather **LT 702**



Leather **LT 704**



Leather **LW 353**



Leather **LT 685**



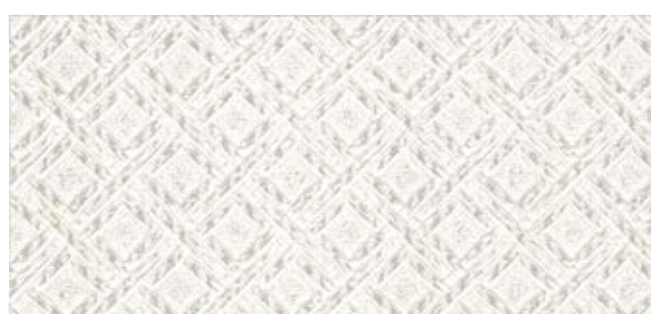
Leather **LW 354**



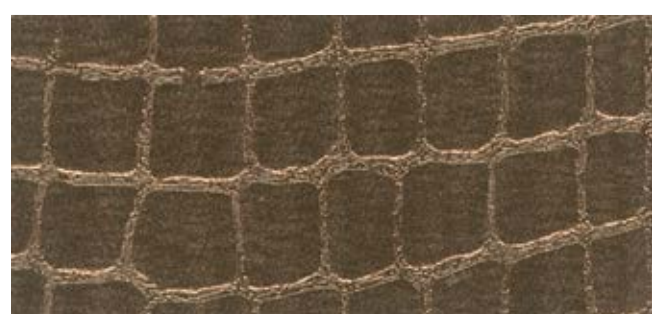
Leather **LT 683**



Leather **LT 671**



Leather **LT 697**

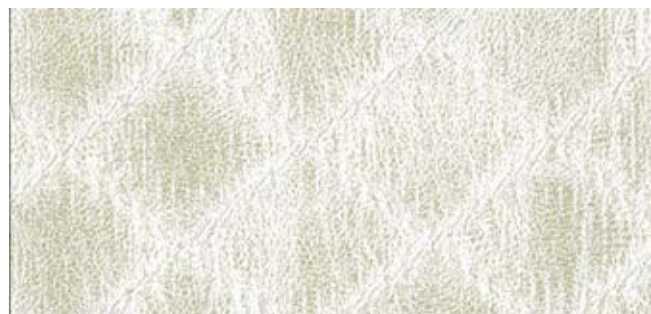


Leather **LT 714**

© LT 704



LT•Leather



Leather **LT 678**



Basic **LW 751**



Artificial Leather **LW 412**



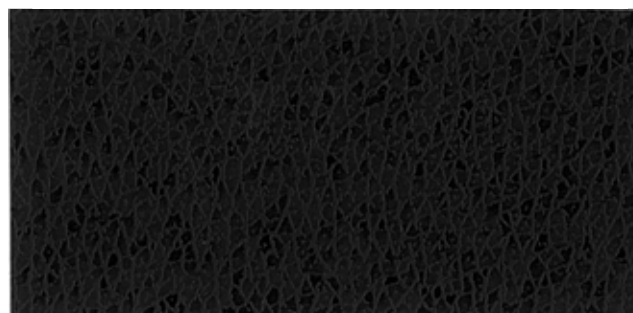
Leather **LT 698**



Leather **LT 679**



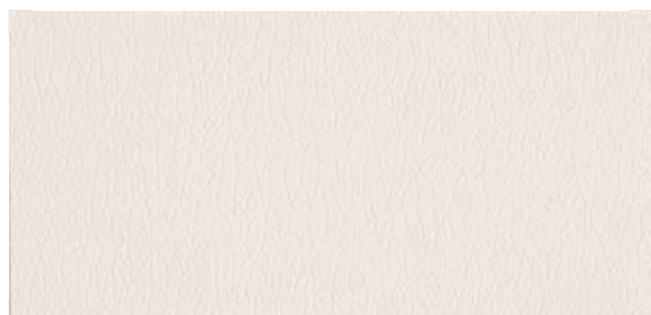
Artificial Leather **LW 411**



Artificial Leather **LW 414**



Leather **LT 687**



Basic **LW 748**



Basic **LW 750**



Leather 레더 **LW 778**



Leather **LT 688**



Artificial Leather **LW 410**



Leather **LT 694**



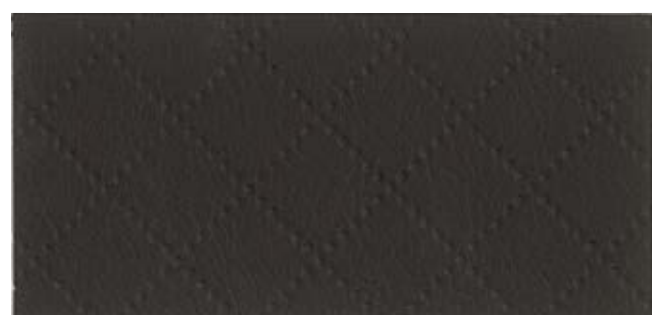
Leather **LW 779**



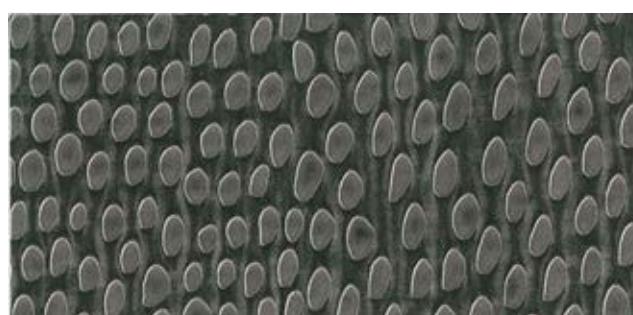
Leather **LT 708**



Basic **LW 749**



Leather **LT 707**



Leather **LT 684**



Marble

NI 987



Crema Marfil

NI 952



Bottichino

NI 950



Red Gold

NI 910



Lime Silver

NI 940



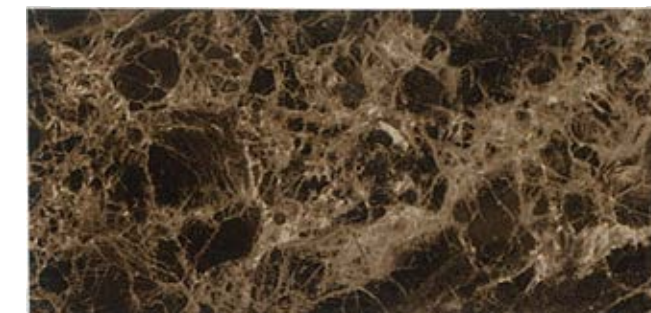
Maron Emperador

NI 945



Lime Gold

NI 941



Maron Emperador

NI 948



Linearity Light Gold

NI 996



Maron Emperador

NI 949



Linearity Gold

NI 997



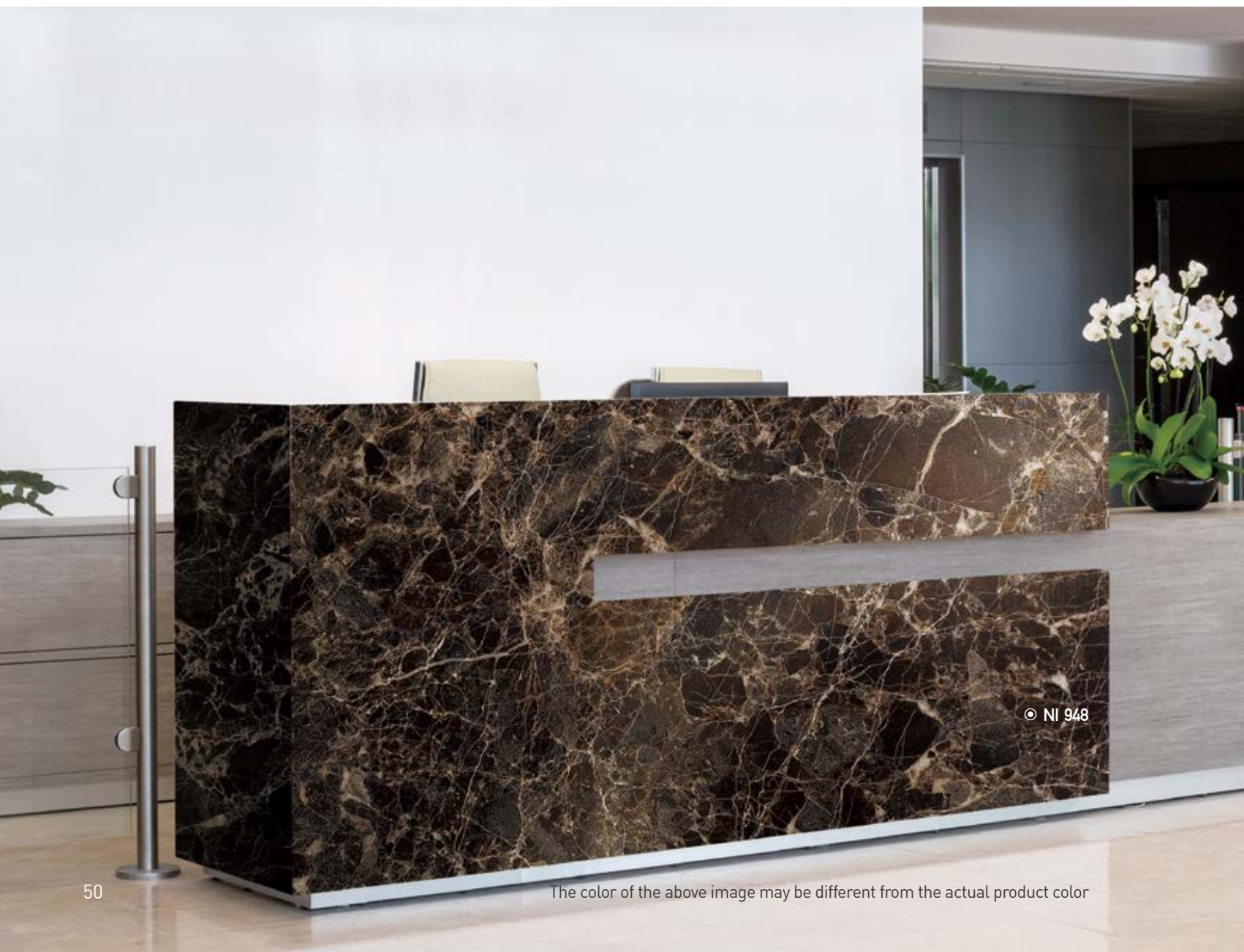
Nero Marquina

NI 953



Svevo

NI 957



NI 948

The color of the above image may be different from the actual product color

© WD 175

WOOD

Wood / Luxury Wood

	Width	Unit	Thickness
Wood	1,230mm	50m/roll	0.24mm
Luxury Wood	1,230mm	50m/roll	0.24mm

* In case of the roll length for the FR(Fire Retardant) is 30m/roll



© WD 174

The color of the above image may be different from the actual product color



Elm **WD 029**



Antique **WD 827**



Lime **WD 830**



Oak **WD 166**



Spruce **WD 124**



Oak **WD 161**



Cream Pearl **WD 112**



White Wood **WD 125**



Elm **WD 904**



White Ash **WD 160**



Real Panel Oak **WD 174**



Real Panel Black **WD 175**

WD • Wood



Oak

WD 028



Birch

WD 794



Lime

WD 831



Teak

WD 320



Birch

WD 793



Annual Ring

WD 814



Ash

WD 800



Ivy

WD 123



Oak

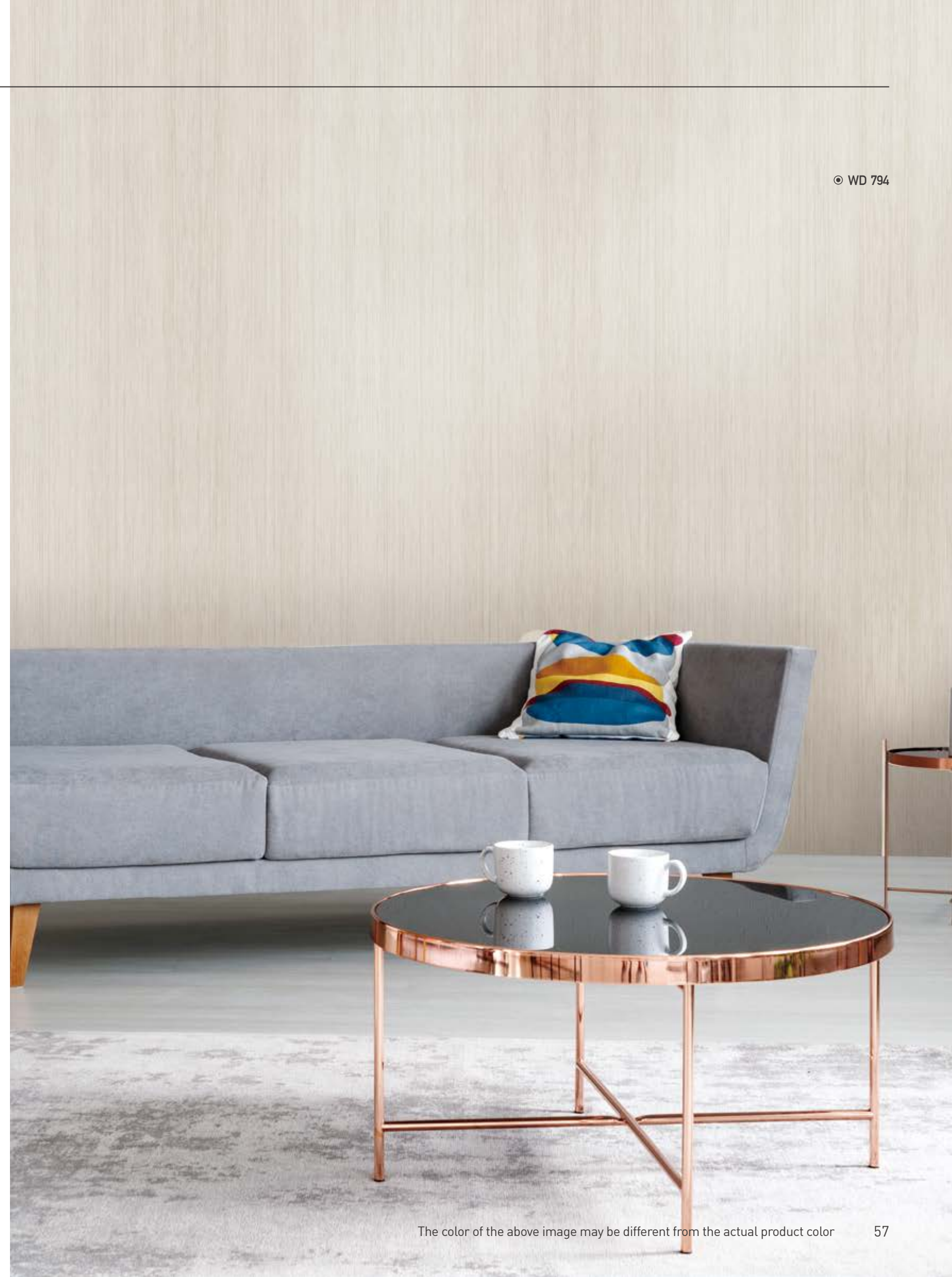
WD 653



Birch

WD 243

© WD 794



The color of the above image may be different from the actual product color

© WD 171



Ash **F G** WD 811



Oak **G** WD 114



Oak **F G** WD 171



Oak **F G** WD 817



Anigre **F G** WD 307



Walnut **G** WD 117



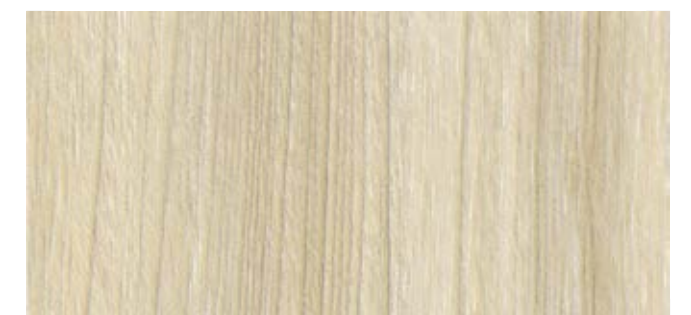
Antique **G** WD 828



Oak **G** WD 167



Antique Teak **G** WD 825



Elm **G** WD 905

WD • Wood



Pine **F G** **WD 902**



French Oak **G** **WD 128**



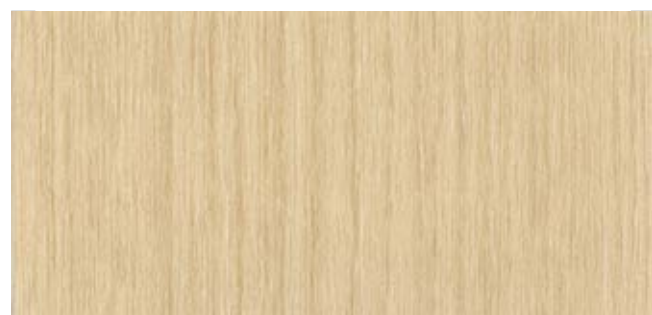
Oak **G** **WD 142**



Oak **F G** **WD 331**



Oak **F G** **WD 173**



Elm **F G** **WD 066**



Natural White **G** **WD 911**



Oak **F G** **WD 163**



Oak **F G** **WD 172**



Pine **F G** **WD 903**

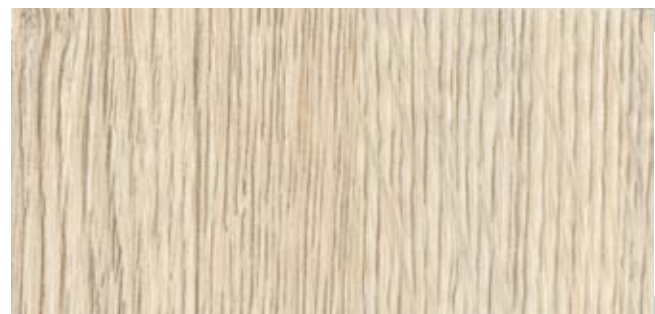
© WD 142





Ash

WD 072



Oak

WD 906



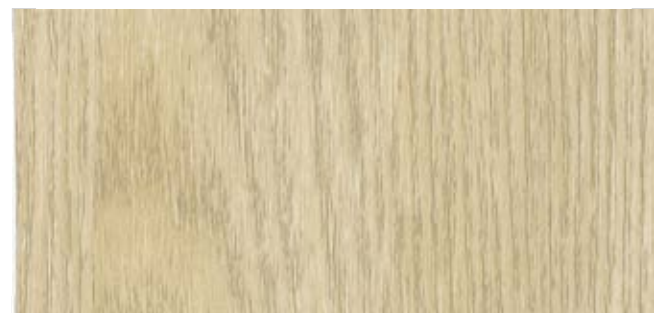
Maple

WD 326



Artificial Wood

WD 833



Ash

WD 121



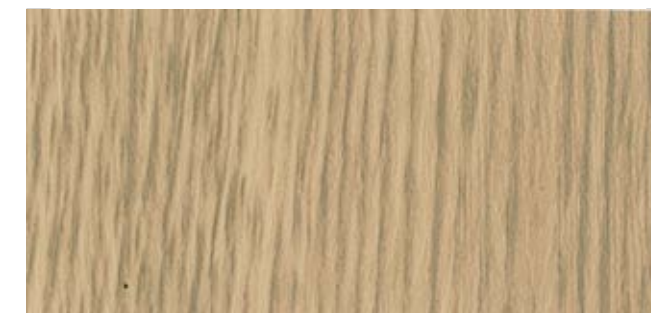
Maple

WD 084



Ash

WD 073



Oak

WD 003



French Oak

WD 127



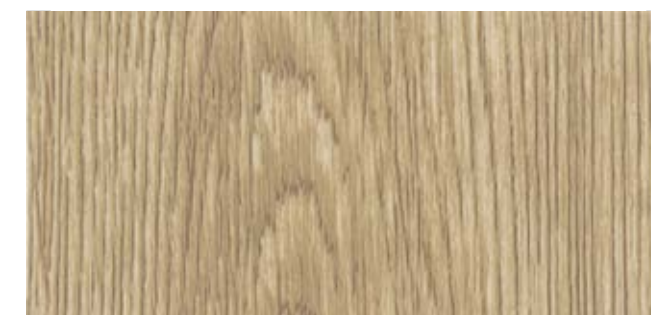
Maple

WD 300



Maple

WD 301



Noce

WD 034



Noce

WD 327



Maple

WD 325



Sycamore

WD 302



Oak

WD 168



Teak

WD 720



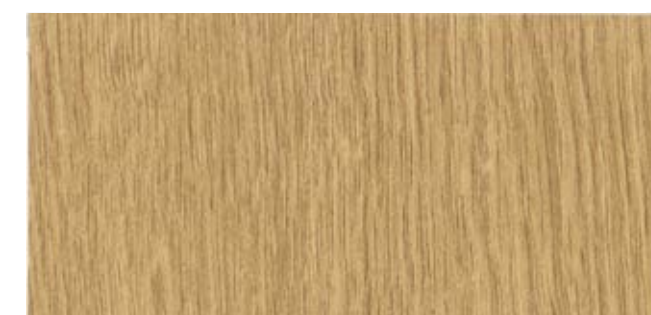
Oak

WD 005



Limba

WD 313



Teak

WD 305



© WD 143

The color of the above image may be different from the actual product color



Oak

WD 818



Antique Teak

WD 826



Antique Teak

WD 824



Ash

WD 812



Noce

WD 329



Oak

WD 823



Oak

WD 115



Oak

WD 143



Sen Antique

WD 336



Oak

WD 332



Pine **G** **WD 094**



Oak **F G** **WD 234**



Oak **F G** **WD 169**



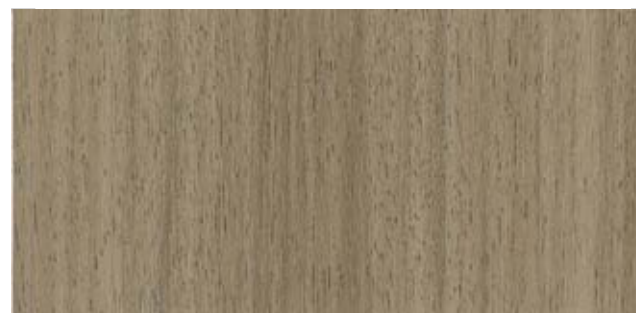
Acacia **F G** **WD 311**



Maple **G** **WD 180**



Oak **F G** **WD 235**



Walnut **G** **WD 308**



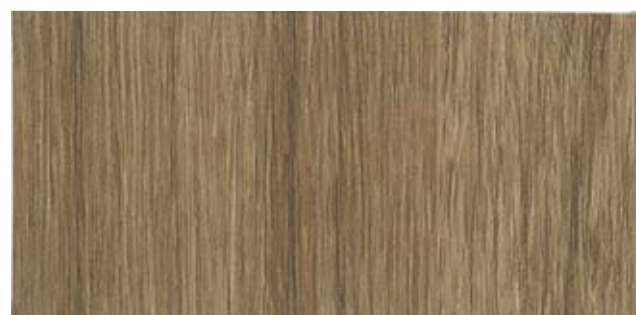
Teak **G** **WD 119**



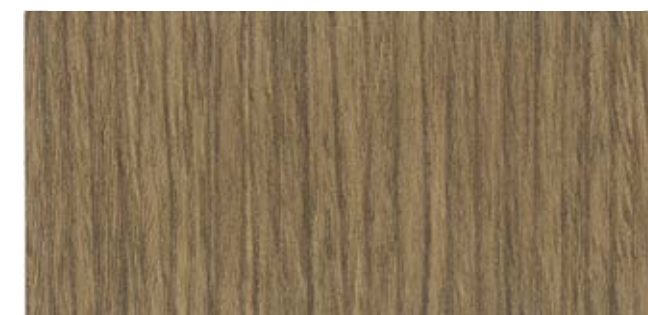
Pine **G** **WD 695**



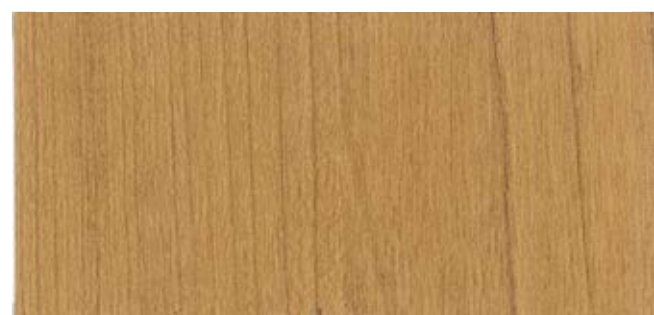
Teak **G** **WD 799**



Teak **F G** **WD 323**



Walnut **G** **WD 258**



Cherry **F G** **WD 008**



Noce **G** **WD 035**



Oak **G** **WD 330**



Walnut **G** **WD 506**



Oak **F G** **WD 225**



Acacia **F G** **WD 049**



Anigre **F G** **WD 820**



Cherry **G** **WD 634**



© WD 259

The color of the above image may be different from the actual product color



Cherry **F G** WD 664



Cherry **G** WD 571



Cherry **G** WD 024



Cherry **G** WD 624



Sen Antique **G** WD 315



Teak **F G** WD 048



Cherry **G** WD 312



Walnut **F G** WD 259



Teak **F G** WD 306



Walnut **F G** WD 296

WD • Wood

© WD 189



© WD 324

The color of the above image may be different from the actual product color



Walnut

© WD 288



Walnut

© WD 009



Walnut

© WD 188



Oak

© WD 226



Teak

© WD 324



Walnut

© WD 189



Wenge

© WD 204



Rampike

© WD 888

WD • Wood



Oak Ⓜ **WD 162**



Oak Ⓜ **WD 391**



Antique Pine Ⓜ **WD 126**



Antique Wood Ⓜ **WD 373**



Sen Antique Ⓜ **WD 338**



Artificial Wood Ⓜ **WD 472**



Graphic Weave Ⓜ **WD 389**



© WD 391



© WD 126



© LW 773



Atelier Middle White

New ◀ ▶ LW 773



Atelier Middle Gray

New ◀ ▶ LW 774

© LW 447



The color of the above image may be different from the actual product color



Pearl Wood **F G** LW 447



Ash **G** LW 875



Zebra **F G** LW 472



Teak **F** LW 996



Antique **G** LW 891



Ash **G** LW 876



Oak **F G** LW 999



Antique **G** LW 892



Oak **G** LW 491



Antique **F G** LW 893



© LW 997

The color of the above image may be different from the actual product color



Larch **LW 872**



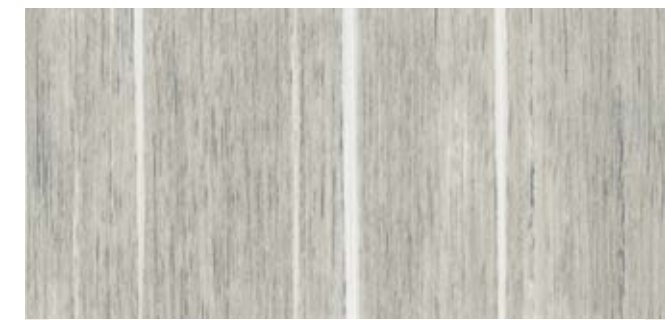
Oak **LW 997**



Oak **LW 998**



Larch **LW 871**



Euro Teak **LW 877**



String Wave **LW 400**



Antique **LW 473**



Artificial Wood **LW 498**



Vintage Panel **LW 478**



Larch **LW 873**



Panel **LW 466**



Maze **LW 888**



Artificial Wood **LW 497**

LW • Luxury Wood



Retro F G LW 780



Teak G LW 487



Vintage Panel G LW 477



Pearl Wood F G LW 448



Vintage Panel G LW 452



Maze G LW 889



Luxury Wood F G LW 993



Maze G LW 890



Luxury Wood G LW 994



Rainbow Blue G LW 350



© LW 452

APPLICATION CONDITIONS AND PRODUCT HANDLING

To ensure the best quality finish, please be sure to follow the recommended settings.

Temperature and Dampness

- Infeel adhesive films should be applied when air and surface temperature are between 68°F (20°C) and 77°F (25°C).
- The minimum recommended temperature is 53°F (11°C). If the temperature is below 53°F : use a heater, such as a portable gas - fired infrared radiant heater to raise the temperature.

High Temperature / Low Temperature Dampness

- Do not apply to damp surfaces. The surface should be completely dry prior to beginning the installation.
- Utilize a heat gun for adhesion strengthening.

Work Environment

- Proper lighting.
The working area should be well lit in order to prevent air pockets or wrinkles on the film.
- Dust free.
Working in a dust free area reduces the potential of particles sticking into the film.

Product Handling

- The film must be kept in a cool and dry place. The product should be installed within one year of purchase.
Note : If handling film in the winter, cold weather conditions can lead to cracks on the product.
Tip : Roll up the remaining film and store it inside a paper tube. This will prevent the film from getting damaged,

Surface Preparation

- The condition of the surface is critical for a quality installation and finish. As a rule, INFEEL adhesive film can be applied onto any clean, dry, smooth or even slightly porous surfaces. These surfaces must be free of dust, grease and wax ; this includes for example, veneer board, aluminum, stainless steel, glass and most painted surfaces. Fresh primer must be completely dry before application because the vapors from the solvents can result in blistering and excessive shrinkage.

Wood / Veneer / Hardboard

1. Smooth and polish the surface, using #180 sandpaper.
2. If there are rough, rugged or joint areas then treat the areas with putty (a filling or tamping) and follow step 1.
3. Coat the surface evenly with the exclusive primer for INFEEL adhesive films.

Steel / Aluminum / Stainless

1. Smooth and polish the surface, using #180 sandpaper.
Scrape the rust off the surface and remove the filth with paint (lacquer) thinner.
2. If there are rough, rugged or joint areas then treat the areas with poly - putty and follow step 1.
3. Coat the surface evenly with the exclusive primer for INFEEL adhesive films.
Try not to leave primer residue on the surface border.

INfeel
www.decoblu.com